



Wireless Technology to Control and Monitor Anything from Anywhere™

SYNAPSE Portal

Wireless Application Development Environment

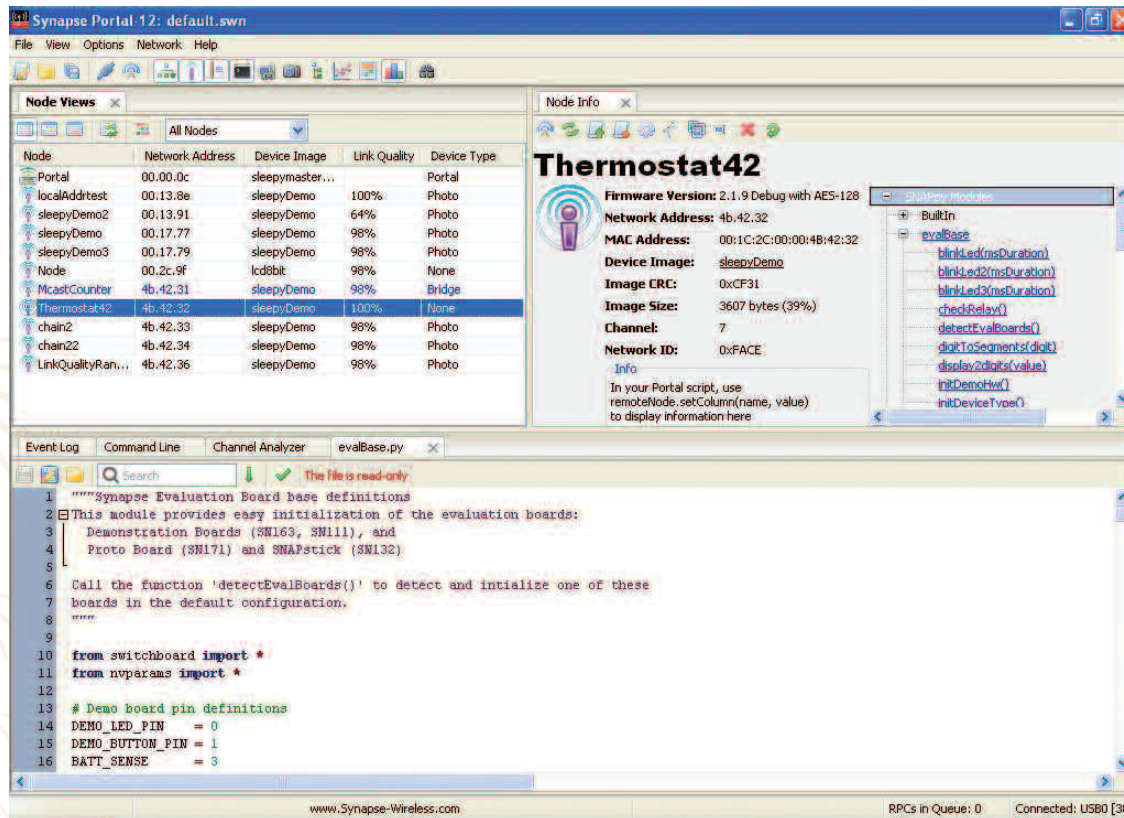
Fast, real time view of your SNAP network

Runs on Windows (2000, XP, Vista) or Linux

Configuration and monitoring of your devices

Customized data logging with native Python scripts

Interactive, rapid application development – wirelessly!



Portal takes you beyond traditional network commissioning tools by giving you an end-to-end view into your wireless application. Implement the functionality you need one step at a time – dynamically, interactively, wirelessly. Portal is with you every step of the way, providing complete access to all functions in every node on your SNAP® network. Want to send an email when a remotely monitored threshold is exceeded? Portal®

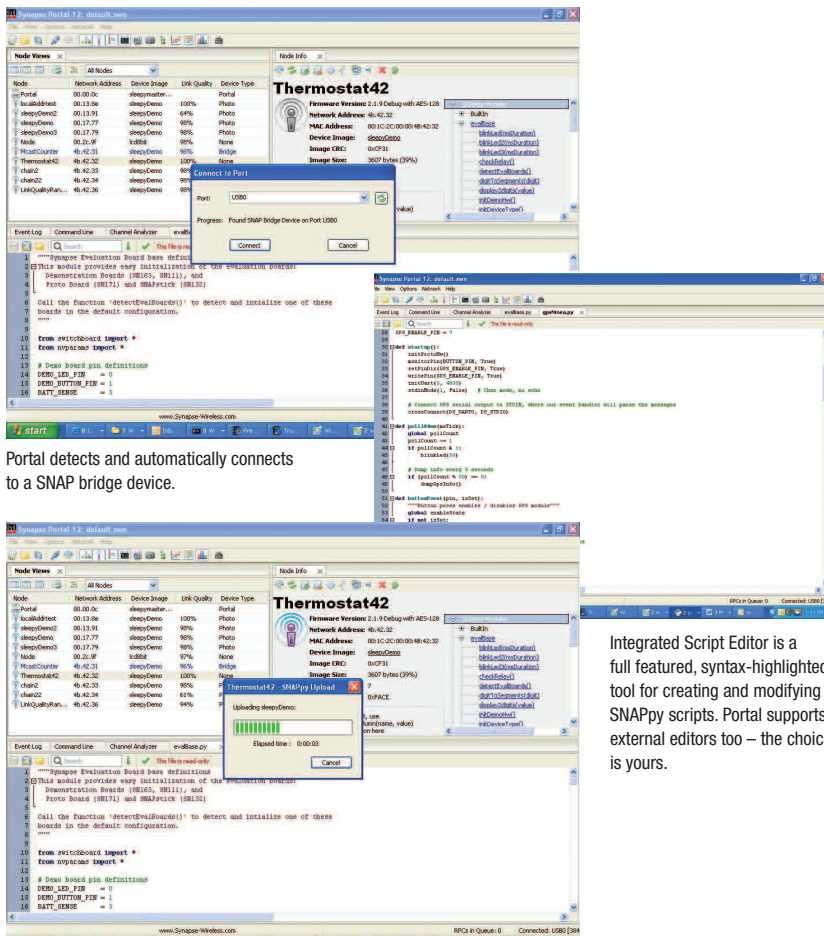
provides email logging of user-defined events. But that's just the tip of the iceberg. Through Portal, remote devices can access the full power of the PC – opening up the potential to virtually unlimited application functionality. As a bridge between the SNAP network and the PC, Portal provides a simple and flexible Python-based interface. Remote nodes can invoke Python functions in Portal using built-in SNAPpy™ RPC calls.



Wireless Technology to Control and Monitor Anything from Anywhere™

SYNAPSE Portal

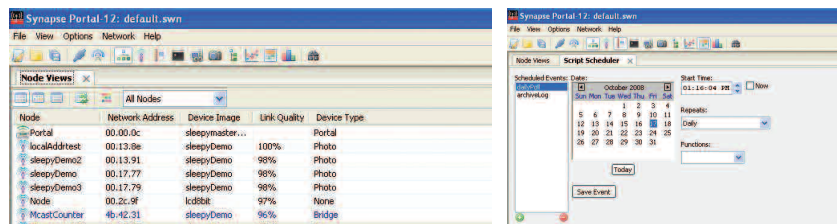
Wireless Application Development Environment



Portal detects and automatically connects to a SNAP bridge device.

Integrated Script Editor is a full featured, syntax-highlighted tool for creating and modifying SNAPpy scripts. Portal supports external editors too – the choice is yours.

Upload new application functionality over the air – the ultimate fast development cycle.



Configurable Node Views allow easy management, even with thousands of devices.

Portal's Script Scheduler allows recurring calendar-time events to be controlled from a central management location.

Portal Features

- Comprehensive administration tool for SNAP networks
- Participates as a full-fledged peer on the network
- Runs on Windows (2000, XP, Vista) or Linux
- Invoke (RPC) script functions on any device in the network
- Remote nodes can invoke (RPC) user-defined scripts within Portal® itself
- Quick and easy interface for modifying and uploading scripts
- Syntax-highlighted Python™ editor for developing SNAPpy™ scripts
- Connect to a SNAP Gateway™ over the Internet or TCP/IP LAN
- SNAPpy application scripts running within Portal have full access to the PC's resources
- Event Log with timestamps and filtering
- Automatically scans for Synapse USB and RS-232 devices
- Intercepts STDOUT of selected remote devices for easy development / debug
- Runtime error detection highlights the line of script code where the error occurs
- Graphical firmware upgrade manager
- Powerful command-line provides full access to local and remote services
- Node configuration editor
- Script scheduler allows actions to be triggered from calendar-time events
- Graphical "Data Logger" view can be configured to display multiple user-defined process values
- Channel analyzer to find ideal channel for network
- Channel scanner to detect new or un-configured nodes

Part Selection

Part No.	Software	Nodes Supported
SW24006	In EK2100 kit	6
SW24012	In EK2500 kit	12
SW24000	Portal	Unlimited

For OEM License, Call Synapse Sales

SYNAPSE Wireless, Inc. 132 Export Circle, Huntsville, Alabama 35806
877 982-7888 · synapse-wireless.com